



SPECIALTY GLAZES & ACCESSORIES



Mayco's specialty products provide unique decorating effects and surface depth to your work with ease. Developed for cone 06/05 firings, these featured specialty glazes can be used as an accent, in design, all over coverage, or in combination with Mayco's other fired product lines. Explore the possibilities with specialty glazes and accessories!

SAFETY ICONS



Non-Toxic

Reviewed by a toxicologist & deemed to have no health risk associated with proper use of the product.



Certified Health Caution

Products bearing the Health Caution seal have appropriate health warning information concerning their use. In addition, there may be additional warnings for compliance with Proposition 65 in California.



AP Non-Toxic

Suitable for use by artists of all ages when used according to manufacturer's directions.



CL Health Caution

Should not be used by children under the age of 12.



Dinnerware Safe

When used according to the manufacturer's directions, the fired surface is free of surface texture that could potentially trap bacteria, and the fired surface is chemically durable.



Dinnerware Safe with Clear Glaze

When used according to the manufacturer's directions, dinnerware is safe with clear glaze or another dinnerware safe glaze.



Not Dinnerware Safe

Not recommended for dinnerware as the fired finish may contain cracks, crevices and other surface textures that can trap food and harbor bacterial growth, or the fired surface is not chemically durable. Recommended for ornamental use only.

Designer Liner

Designer Liner is clay based and heavily pigmented. Use to create bold or fine lines, dots letters, or sign the bottom of your work.

**CONE
06 - 6**
(998°C - 1202°C)
(1828°F - 2194°F)



SG-401
Black



SG-402
White



SG-403
Red



SG-404
Blue



SG-405
Green



SG-406
Brown



SG-407
Yellow



SG-408
Orange



SG-409
Bright Green



SG-410
Bright Blue

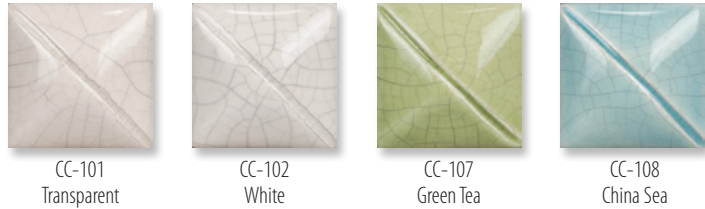
In Design

The provided writer tip allows for precise designs or use a brush to create a watercolor and ink wash effect. Designer Liner is best when used under non-moving transparent or semi-transparent glazes. Fires matte when glaze is not applied over top.



Classic Crackles®

Classic Crackles® add a level of sophistication and dimension to your designs. Classic Crackles® are glazes that are designed to “craze”; that is, develop subtle surface cracks in the fired finish.



Highlight the Crackle

After firing, apply an acrylic paint or ink over the ware and wipe off, allowing the ink to fill and highlight the cracks. Black acrylic or ink is the most common color used, but you can use any color of your choosing.



SNOWFALL & Duncan® SNOW

Create fluffy, snow-like effects with these specialty dimensional glazes.



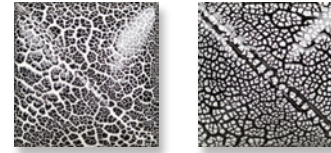
More Than Snow

Although it's perfect for a snowy look, Snowfall and Fired Snow can simulate ocean foam, clouds, textured surfaces and more. You can even tint or accent with Stroke & Coat® or Foundations® glazes.



COBBLESTONE

Cobblestone creates a textured “cobbled” surface of raised, irregular chips when applied over another glaze and fired.



SG-201 Black Cobblestone (over white base glaze)
SG-202 White Cobblestone (over black base glaze)



Great for replicating skin patterns and textures of reptiles, spotted animals, mushrooms, and more!

Tinting Cobblestone

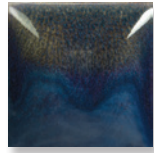
To create colored Cobblestone, brush Stroke & Coat® glaze of choice over SG-202 White Cobblestone and fire.



Pottery Cascade™

Pottery Cascade™ are moving, flowing glazes, commonly used under or over other glazes to create reactions and movement.

CONE 06/05
(998°C - 1031°C)
(1828°F - 1888°F)



PC-601
Clear Cascade
(over EL-118 Blue Grotto)



PC-602
White Cascade
(over EL-118 Blue Grotto)



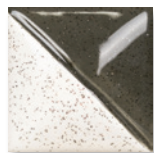
High Fire Looks

For low-fire designers seeking to create the looks achieved at higher temperatures. The variability ensures that no two designs will be alike.

Speckta-Clear

Speckta-Clear functions as a high-gloss clear glaze with the added surprise of colored specks! They change the look with different base glazes.

CONE 06/05
(998°C - 1031°C)
(1828°F - 1888°F)



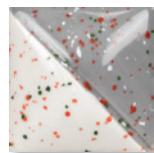
SG-701
Speckta-Clear Star Dust
(over SC-99 Char-ming and unglazed bisque)



SG-702
Speckta-Clear Celebration
(over SC-35 Gray Hare and unglazed bisque)



SG-703
Speckta-Clear Autumn
(over SC-35 Gray Hare and unglazed bisque)



SG-704
Speckta-Clear Peppermint
(over SC-35 Gray Hare and unglazed bisque)

Decorated or Undecorated

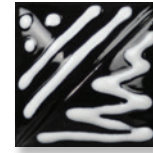
Apply Speckta-Clear over base-coated ware or directly onto undecorated ware. You can use for all over coverage or in design with Stroke & Coat® or Foundations®, and Fundamentals® Underglazes.



Duncan® French Dimensions™

French Dimensions™ are perfect for adding that extra depth of dimension your project craves.

CONE 06/05
(998°C - 1031°C)
(1828°F - 1888°F)



FD258
Pure White
(over black base glaze)



FD254
Black Licorice
(over white base glaze)



Outline your design shapes with French Dimensions™ to mimic a stained glass effect or layer it under a non-moving glaze for additional texture.



Astro Gem™

Astro Gems™ are an underglaze-based textural glaze that contain tiny crystals, which fire to jewel-like spots on a matte surface. May be applied to both greenware and bisque.

CONE 06-04
(998°C - 1061°C)
(1828°F - 1945°F)



AS-510
White Opal



AS-512
Black Diamond



AS-513
Golden Sand



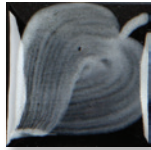
Chips shown represent Astro Gems™ applied to low-fire earthenware greenware, then fired to cone 04 bisque. S-2101 Clear was applied to the right-side of the chip and fired to cone 06.

Add a Tint

Create custom colors by tinting AS-510 White Opal with Mayco Fundamentals® Underglazes.

Intense pigment and high definition are the trademark of Duncan E-Z Stroke® Translucent Underglazes. Perfect for brushwork, airbrushing and antiquing, helping you achieve the look of watercolor or detailed shading on greenware or bisque.

CONE 06-6
(998°C - 1202°C)
(1828°F - 2194°F)



EZ013
White



EZ101
Neon Yellow



EZ026
Yellow Orange



EZ034
Orange



EZ058
Poppy Orange



EZ057
Coral Red



EZ075
Passion Red



EZ002
Cinderella Pink



EZ030
Rose



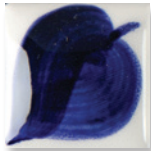
EZ050
Plum Purple



EZ027
Blue Turquoise



EZ035
Dutch Blue



EZ023
Midnight Blue



EZ032
Peacock Green



EZ018
Chartreuse



EZ028
Leaf Green



EZ033
Ivy Green



EZ024
Royal Green Blue



EZ011
Sienna Brown



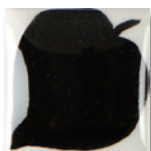
EZ038
Medium Mahogany



EZ010
French Brown



EZ047
Thundercloud Grey



EZ037
Black



EZ012
Cobalt Jet Black



E-Z Stroke® Translucent Underglazes are perfect for free flowing brushwork and designs. Enhance the shading and color depth with additional coats.

Join the Conversation

Show us how you #MAKEITMAYCO Hashtag your work to be featured! Share your success, gain inspiration and connect with other ceramic artists in our Facebook Groups!



Join group

Mayco Mud Room Society

Mayco Earthenware Society

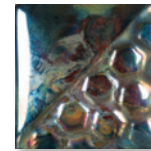
RAKU

Mayco Raku glazes are designed to develop beautiful metallic lusters and crackle patterns when fired according to raku firing processes.

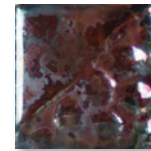
CONE 06-04
(998°C - 1063°C)
(1828°F - 1945°F)



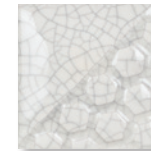
Except:
RK-103 White Crackle
which is AP Non-Toxic



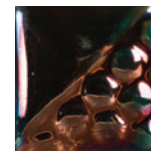
RK-100
Black Metallic



RK-101
Copper Metallic



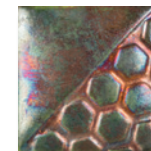
RK-103
White Crackle



RK-105
Copper Penny



RK-106
Peacock Matte



RK-107
Oil Slick



LOW-FIRE CLEAR GLAZES

Preserve and enhance the surface of your work with a range of Mayco and Duncan low-fire clear glazes that are available in both brushing and dipping.

CONE 06/05
(998°C / 1046°C)
(1828°F / 1915°F)



Clear One

Fast drying and gloss finish. Compatible with Chrome Tin pigments and luster. Available as a brushing glaze **NT-BR Clear One Brushing** or dipping glaze **NT-CLR Clear One Dipping**.

Crystal Clear

Clean, clear surface and gloss finish. Luster compatible. Crystal Clear may not be compatible with all red clays as a blueish haze may appear after firing. Available as a brushing glaze **S-2101 Crystal Clear Brushing** or dipping glaze **S-2000 Crystal Clear Dipping**.

Matte Transparent

Matte finish at cone 06. Will gloss at higher temperatures. Luster compatible. Available only as a brushing glaze **C-300 Matte Transparent**.

Duncan Pure Brilliance

Matte finish at cone 06. Will gloss at higher temperatures. Overglaze compatible. Available as a brushing glaze **PB001 Pure Brilliance Brushing** or dipping glaze **PBDIP Pure Brilliance Dipping**.

Duncan Satin Clear

Produces a smooth, opaque matte clear finish with only two coats. Satin Clear Glaze can be successfully used over opaque and translucent underglazes. Available only as a brushing glaze **SN351 Clear**.

Duncan Envision Clear

Made to give consistently true-color finishes and outstanding brushability for ease of application. Envision® clear glaze is overglaze compatible. Available only as a brushing glaze **IN1001 Envision Clear**.

Looking for a clear glaze with a speckled finish? Check out Speckta-Clear featured on page 5.

SCAN ME!

Learn about all of Mayco's clear glaze selection



CLAY MENDER

AC-306 Clay Mender is an “enhanced slip” that is intended to be used to repair and/or add attachments to greenware or bisque. Simply moisten pieces with water - no extra adhesive required!



KILN WASH

AC-001 Kiln Wash repairs damages, divots and dings on kiln shelves and provides a protective coating that prevents glaze from adhering to the kiln shelf. One proper application of Mayco Kiln Wash will remain effective through multiple firings, increasing the working life of the kiln shelf.



SILKSCREEN MEDIUM

AC-310 Silkscreen Medium is a thickening agent that, when added to Stroke & Coat®, Designer Liner, Underglazes, or acrylics, creates a “ceramic paste” that is suitable to be used in silkscreen processes. Use with Mayco’s Designer Silkscreens for a great and easy way to add intricate detail to your ceramic work or any craft surface.



Duncan THIN 'N SHADE

AS957 Thin 'N Shade is a non-toxic, water-based medium that can be mixed with any water-based ceramic color, fired or non-fired. Thin 'n Shade™ prolongs the drying time of colors so they remain workable for a longer period. It is an excellent problem solver in areas where the water system contains contaminants that can affect ceramic color results.



WAX RESIST

AC-302 Wax Resist is a water-based coating that acts to repel glaze and prevent color from adhering to the surface on which it is applied. As the kiln is fired the wax dissipates, leaving the surface beneath as it was prior to firing. Can be used for waxing the foot of pieces before glazing or used as a decorative design technique.



OVERGLAZES

Overglazes refers to a group of lusters and metallics applied to a previously glazed and fired surface. When fired, yield the brilliance of gold metallic, white gold metallic, and a rainbow of luster hues, like that of a pearl.

**CONE
019 - 018**
(668°C - 696°C)
(1234°F - 1285°F)

**CONE
020***
(1175°C / 2147°F)
*Only for OG803



OG801
Bright Gold



OG802
White Gold



OG805
Premium Gold



OG803
Mother of Pearl



Clean-Up with Essence

OA901 Essence is a must-have cleaning solution for all your overglaze brushes and tools. If overglazes are accidentally applied in the wrong area, dip a cotton swab in Essence and neatly wipe off misplaced color.

SCAN ME!



Learn how to use
Mayco Overglazes.

Overglaze Brushes

Choose from Mayco's premium quality brushes to produce the coverage or strokes you wish to achieve. To prevent cross-contamination between Gold and White Gold, the color of the handle coordinates with the overglaze to be used. Brushes used to apply Mayco Overglazes should be cleaned with Essence and wiped on a paper towel. Brushes must be thoroughly dry before use.

OB-901 Mother of Pearl 1/4" Shader
OB-910G #0 Liner
OB-916G #6 Oval Shader
OB-910W #0 Liner
OB-916W #6 Oval Shader



MID-RANGE RESULTS

While intended for 06/05 use, many of these glazes can be taken up to a higher temperature with interesting and surprising results. We recommend testing on your clay body and in your kiln prior to use.

SCAN ME!



Learn more about the
performance of our Low-Fire
Specialty Glazes at Cone 6.

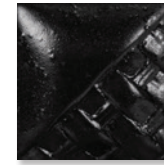


CONE 6 RESULTS

Astro Gems™



AS-510
White Opal



AS-512
Black Diamond



AS-513
Golden Sand

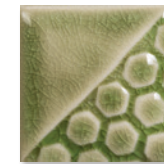
Classic Crackles®



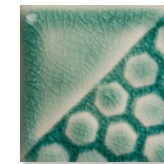
CC-101
Transparent



CC-102
White

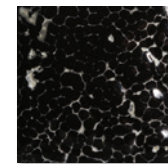


CC-107
Green Tea

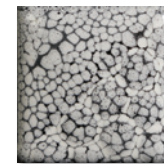


CC-108
China Sea

Cobblestone



SG-201
Black Cobblestone
(over white base glaze)



SG-202
White Cobblestone
(over black base glaze)

Designer Liner



SG-401
Black



SG-402
White



SG-403
Red



SG-404
Blue



SG-405
Green*



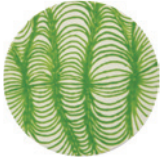
SG-406
Brown*



SG-407
Yellow



SG-408
Orange



SG-409
Bright Green



SG-410
Bright Blue

*SW-004 Zinc Free Clear is recommended.

Pottery Cascades™

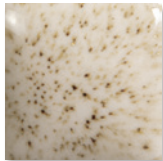


PC-601
Clear Cascade
(over EL-118 Blue Grotto)

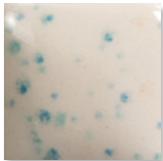


PC-602
White Cascade
(over EL-118 Blue Grotto)

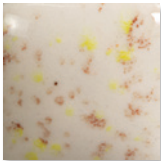
Speckta-Clear



SG-701
Star Dust
(over unglazed bisque)



SG-702
Celebration
(over unglazed bisque)

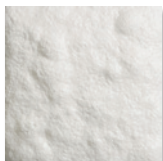


SG-703
Autumn
(over unglazed bisque)



SG-704
Peppermint
(over unglazed bisque)

Snowfall



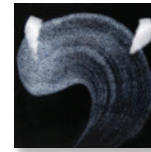
SG-302
Snowfall

Duncan Snow



SY546
Snow

Duncan E-Z Strokes® Translucent Underglazes



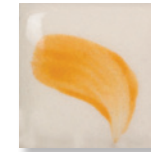
EZ013
White



EZ101
Neon Yellow



EZ026
Yellow Orange



EZ034
Orange



EZ058
Poppy Orange



EZ057
Coral Red



EZ075
Passion Red



EZ002
Cinderella Pink



EZ030
Rose



EZ050
Plum Purple



EZ027
Blue Turquoise



EZ035
Dutch Blue



EZ023
Midnight Blue



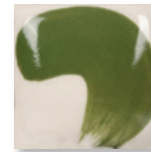
EZ032
Peacock Green



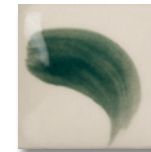
EZ018
Chartreuse



EZ028
Leaf Green



EZ033
Ivy Green



EZ024
Royal Green Blue



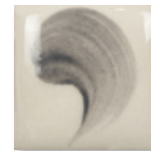
EZ011
Sienna Brown



EZ038
Medium Mahogany



EZ010
French Brown



EZ047
Thundercloud Grey



EZ037
Black



EZ012
Cobalt Jet Black

Duncan French Dimensions™



FD258
Pure White



FD254
Black Licorice

Stroke & Coat®

The Creative Choice

An intermixable, versatile glaze
perfect for the classroom or studio.



Elements™

Inspired by nature, and designed to
simulate the aesthetic movement and
interest of mid and high fire glazes.



UNDERGLAZES

Fundamentals® | Designer Liner | E-Z Stroke®

Vibrant color, highly versatile and
a staple for ceramic artists.



Expand your palette
with these glaze lines and
other products from Mayco.



MC-480E 6/23
Mayco Colors
Coloramics, LLC
4077 Weaver Court South
Hilliard, OH 43026

614-675-2020
info@maycocolors.com
MaycoColors.com

